

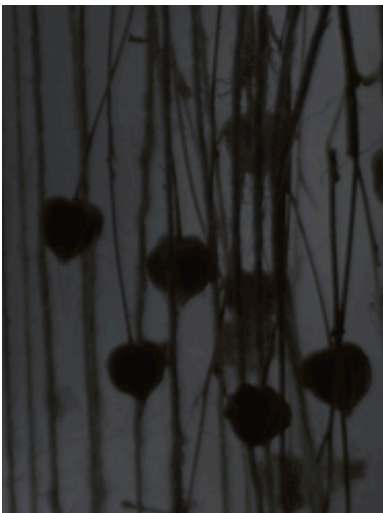
Our 22nd Season in the Berkshires

CLOSE ENCOUNTERS WITH MUSIC

Subscribe Here to Reserve Your Seats
for the entire season

**Close Encounters With Music
opens 22nd season with
ANATOMY OF A MELODY--
BEETHOVEN, BRAHMS and World Premiere of
SCHOENFIELD'S
"SHAATNEZ"**

Saturday October 19, 6 PM at THE MAHAIWE



Paul Schoenfield, whose music is widely performed and who moves with what has been described as "wizardly ease" from jazz to vaudeville and klezmer to ragtime and Broadway--sometimes in a single composition--combines exuberance and seriousness, familiarity and originality, lightness and depth. His work is inspired by the whole range of musical experience, popular styles both American and foreign, vernacular and folk traditions, as exemplified in *Café Music*, his runaway classical hit. The new *Shaatnez* (which translates most readily from the Hebrew or Coptic--the origins of the term are obscure--as "linsey-woolsey") weaves together not only the bawdy Viennese melody adopted by Beethoven, but also the famous Russian song, "Dark Eyes," to astonishing effect.

"These two melodies co-exist like a marriage made in heaven," says Close Encounters With Music artistic director Yehuda Hanani, who has known Schoenfield since student days at the Marlboro Festival. "Paul is a little bit like Ravel. He combines mathematical precision with passionate folkloric elements. It's on the edge and has the acerbic frenzy of music of modernity, but with wit, intelligence, and deep understanding of past traditions and



Yehuda Hanani, cello

Tune into the weekly broadcasts/podcasts **Classical Music According to Yehuda** on WAMC Northeast Radio, Friday mornings at 11:30.

techniques. Shaatnez is framed on the program with two masterpieces, to which it stands up brilliantly."

Schoenfield has received commissions, grants and awards from Chamber Music America, the National Endowment for the Arts, the Rockefeller Fund, the America Composers Forum and many other organizations; his compositions can be heard on Angel, Decca/London's Argo label, Vanguard, EMI, Koch, BMG and New World.

The heavenly Brahms Piano Quartet Opus 26 is as close to symphonic scale as you get in chamber music. With its drama and gypsy vigor, it delivers an enthralling range of emotions. Beethoven's Trio in B-Flat Major spins out variations on a popular theme, setting the stage for the newly-penned piece by Schoenfield, which incorporates the same theme. The evening provides enduring classics with a contemporary twist.



DSO Sound Bites with Miriam Fried

More About Shaatnez

One idea of the biblical notion of shaatnez is that mixing wool and linen upsets the environmental and/or metaphysical fabric of the universe. In combining popular, classical, high and low, it could be said that much of Schoenfield's signature style is "shaatnez," that is a weaving and mixing, pastiche and superimposition spun into something classical music has rarely seen before--that reinvigorates old forms.

Renana Gutman, piano; Miriam Fried, violin; Paul Biss, viola; Yehuda Hanani, cello

For tickets contact

The MAHAIWE Box Office
at 413.528.0100.

"When's the last time that a piece of music made you laugh out loud...? He gets an 'A' for wit in my grade book... This is some of the most life-affirming new music that I've heard in quite some time. It's not all cheerful...but it does support the hypothesis that our lives are nothing more than a cosmic Keystone Kops film that has pie-fights, head-clubbing, and it stimulates the comforting thought that all of us eventually are going... down?... up?... wherever we're going, together." --Classical Net



Renana Gutman, piano



Paul Biss, viola



CONVERSATIONS WITH...

Intimate and stimulating afternoons of music, literature and exchanges of ideas with notable performers, critics, authors, and cultural personages.

**Footlights at the Met--
A Peek Behind the Curtain
Saturday November 10, 4 PM
At The Mount, Lenox**



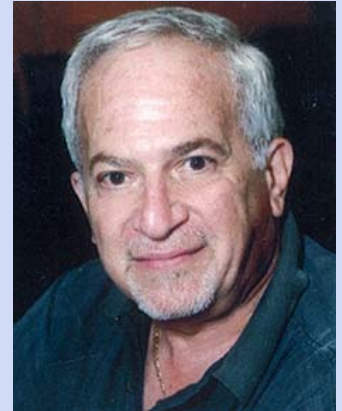
Close Encounters With Music and Edith Wharton's The Mount present international costume designer **Charles Caine**, who will offer a "behind-the-scenes" look at the Met and relate his experiences with Maria Callas, Beverly Sills, Renata Scotto, and more. The presentation features costumes and memorabilia of historic theatrical fashions. Admission is \$15 and includes light refreshments.

Costumes by **Charles Caine**

Contact CEWM to make a reservation:

800.843.0778 cewmusic@aol.com

Miriam Fried, violin



Charles Caine

ANNUAL LUNCHEON MUSICALE BENEFIT
Sunday December 8, 12:30 PM
at Blantyre in Lenox, MA



Savor a superb luncheon--prepared by a major award-winning chef--in the incomparable elegance of Blantyre, preceded by a light hearted program of music. An afternoon in the style of the great salons of 19th century Europe as you support our Commissioning Project.

[To request more information click here.](#)

TICKET INFORMATION

Tickets, \$45 (Orchestra and Mezzanine) and \$25 (Balcony), are available at The Mahaiwe Performing Arts Center box office, 413.528.0100.

Subscriptions are \$225 (\$195 for seniors) for a series of 6 series concerts PLUS one subscriber-only concert. Call 800.843.0778 or visit our website at cewm.org.

Note: Tickets for June 14 concert at Tanglewood's Ozawa Hall can be purchased through CEWM only.

THE MIRACULOUS VIOLIN: AN EVENING WITH VADIM GLUZMAN AND ANGELA YOFFE
Saturday December 21, 6PM at the Mahaiwe

In technique and sensibility, Gluzman harkens back to the Golden Age of violinists of the 19th and 20th centuries, while demonstrating the passion and energy of the 21st century. He brings his "ex-Leopold Auer" Strad to a recital with his wife, pianist Angela Yoffe. A dazzling holiday program featuring the music of Mozart, Stravinsky, Tchaikovsky, Prokofiev and Castelnuovo-Tedesco.

"Gluzman's sensational performance galvanized everyone around him."
 --*The London Telegraph*

Upcoming Concerts

Mahaiwe Performing Arts Center
Great Barrington, MA:
 Saturday October 19 at 6 PM



Vadim Gluzman, Violin and Angela Yoffe, piano

**Anatomy of a Melody
Beethoven, Brahms and
Schoenfield**

Saturday December 21
6 PM

**The Miraculous
Violin: An Evening with
Vadim Gluzman &
Angela Yoffe**

Saturday March 22 at
6PM

Linden String Quartet

Sunday April 27 at 3PM
Magyar!

Saturday May 17 at 6PM

**Beethoven and
The Dawn of
Romanticism**

**Blantyre
Lenox, MA:**

Sunday December 8 at
12:30 PM

**Annual Luncheon
Musical Benefit**

**Ventfort Hall
Lenox, MA:**

Saturday February 22 at
6PM

**Mid-Winter Fireside
Subscriber's Only
An Evening of Song:
Surveying the Centuries**

**Ozawa Hall,
Tanglewood
Lenox, MA:**

Saturday June 14 6PM

**Antonin Dvořák--
A Bohemian Idyll**

**Conversations
With...**

**The Mount
Lenox, MA:**

Sunday November 10
3 PM

**Footlights At the Met:
A Peek Behind The
Curtain**

The West Stockbridge Historical Society presents:
The Larry Vaber Memorial Concert featuring

**Dr. Richard Ziter, Piano
& The Award Winning
Hyperion String
Quartet**



**Sunday October
13th, 4:00PM**

**West Stockbridge
Congregational Church**
45 Main Street, West Stockbridge

**Reception with musicians
to follow**

General Admission \$35
Reserved section \$75
Sponsorship opportunities available:

Contact Zina at 413.232-0002
For more info or to purchase tickets
go to weststockbridgehistory.org
or call 413-232-4270.

Concert proceeds will go toward the
restoration of Vaber Hall in the West
Stockbridge 1854 Town Hall.

The CEWM season continues in 2014 with world-renowned musicians, including four leading violin virtuosos--Yehonatan Berick, Erin Keefe, Itamar Golan, and Joana Genova--along with outstanding pianists, vocalists, and clarinetist extraordinaire Alexander Fiterstein. Grammy Award-winning mezzo-soprano Kelley O'Connor makes her Berkshire debut as does the Linden String Quartet; and CEWM introduces a Gypsy cimbalom player in a program devoted to Hungarian music. 2013

marks an important birthday for Giuseppe Verdi, which is celebrated with a special program and film on his legacy--"Life, Liberty and the Pursuit of Verdi"--one of two in the "Conversations With..." series. For more information and to purchase tickets visit our website cewm.org.

Close Encounters With Music stands at the intersection of music, art and the vast richness of Western culture. Entertaining, erudite and lively commentary from founder and Artistic Director Yehuda Hanani puts the composers and their times in perspective to enrich the concert experience. Since the inception of its Commissioning Project in 2001, CEWM has worked with the most distinguished composers of our time--Paul Schoenfield, Osvaldo Golijov, Lera Auerbach, Jorge Martin, John Musto, and Robert Beaser--create important new works that have already taken their place in the chamber music canon and on CD. A core of brilliant performers includes pianists James Tocco, Adam Neiman, Walter Ponce and William Wolfram; violinists Shmuel Ashkenasi, Yehonatan Berick, Vadim Gluzman and Toby Appel; harpsichordist Lionel Party; clarinetists Alexander Fiterstein, Charles Neidich; vocalists Dawn Upshaw, Amy Burton, Jennifer Aylmer, Robert White, Lucille Beer and William Sharp; the Vermeer, Amernet, Muir, Manhattan, Avalon, Hugo Wolf quartets, and Cuarteto Latino-americano; and guitarist Eliot Fisk. Choreographer David Parsons and actors Richard Chamberlain, Jane Alexander and Sigourney Weaver have also appeared as guests, weaving narration and dance into the fabric of the programs.

Subscribe Now
To Reserve Your Season Seats

Lenox Club:
Lenox, MA:
Sunday April 6 at 3PM
Life, Liberty and the Pursuit of Verdi



Massachusetts Cultural Council

Close Encounters With Music
PO Box 34, Great Barrington, MA 01230
800.843.0778 www.cewm.org cewmusic@aol.com

[Forward email](#)



Try it FREE today.

This email was sent to shadwrks@bellsouth.net by cewmusic@aol.com |
[Update Profile/Email Address](#) | Instant removal with [SafeUnsubscribe™](#) | [Privacy Policy](#).
Close Encounters With Music | PO Box 34 | Great Barrington | MA | 01230